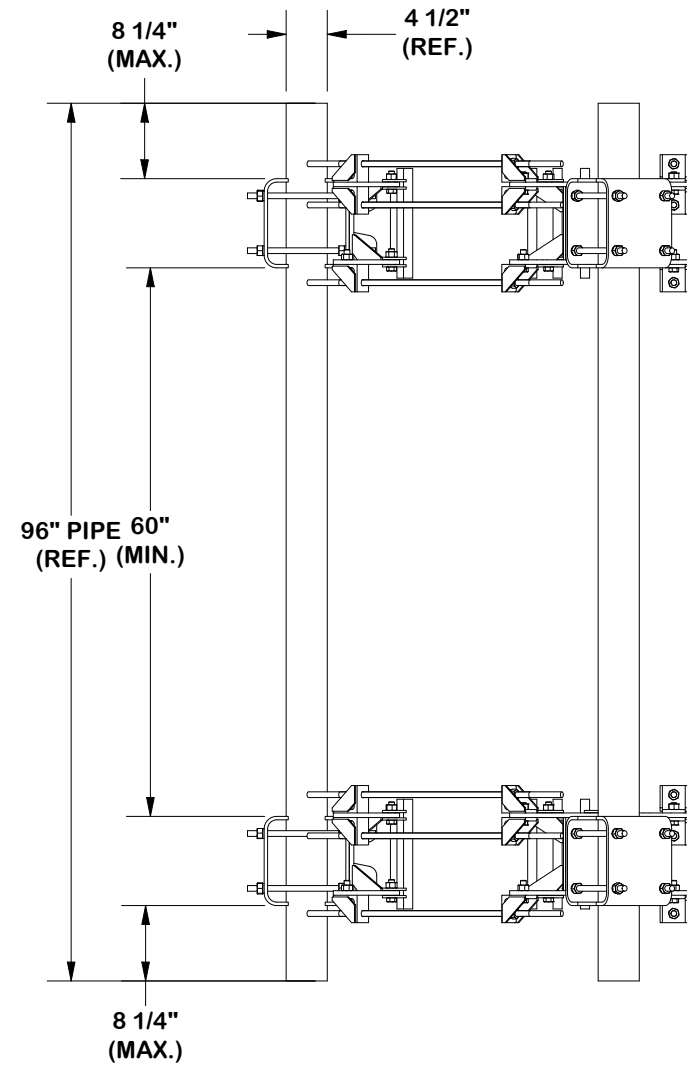
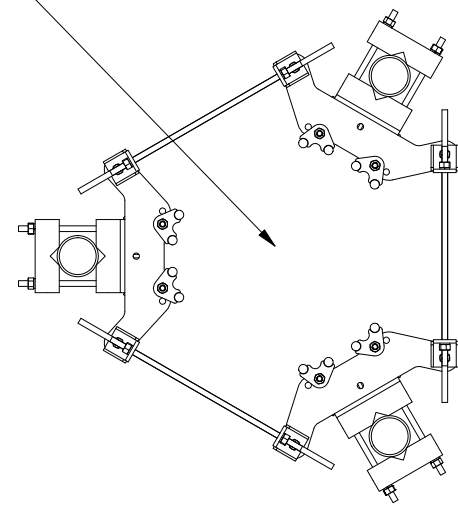
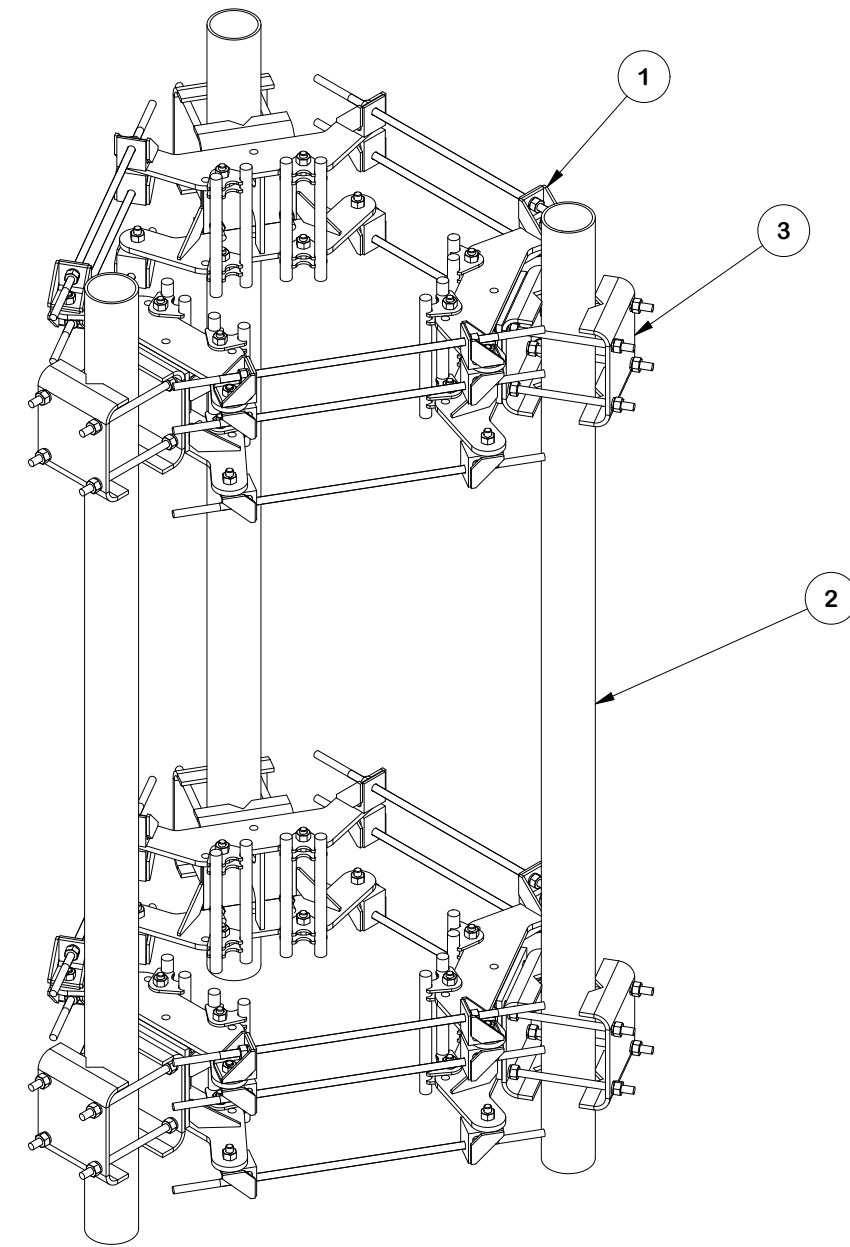


FOR POLES 14" TO 45" DIA



PARTS LIST									
ITEM	QTY	PART NO.	BOX NO.	PART DESCRIPTION	LENGTH	UNIT WT.	NET WT.		
1	2	FLX3-SD		FLEXIBLE RING MOUNT 3-SIDED ASSEMBLY		280.11	560.23		
2	3	P496		4-1/2" X 96" SCH. 40 GALVANIZED PIPE	96 in	91.60	274.80		
3	3	FMA2	P-FMA2	FLUSH MOUNT ADAPTER DUAL LEVEL		59.76	179.27		
						TOTAL WT. #	1014.30		



TOLERANCE NOTES

TOLERANCES ON DIMENSIONS, UNLESS OTHERWISE NOTED ARE:
 SAWED, SHEARED AND GAS CUT EDGES ($\pm 0.030"$)
 DRILLED AND GAS CUT HOLES ($\pm 0.030"$) - NO CONING OF HOLES
 LASER CUT EDGES AND HOLES ($\pm 0.010"$) - NO CONING OF HOLES
 BENDS AND ANGLES ARE $\pm 1/2$ DEGREE
 ALL OTHER MACHINING ($\pm 0.030"$)
 ALL OTHER ASSEMBLY ($\pm 0.060"$)

PATENT INFORMATION: WWW.SITEPRO1.COM/PATENTS

PROPRIETARY NOTE:
 THE DATA AND TECHNIQUES CONTAINED IN THIS DRAWING ARE PROPRIETARY INFORMATION OF VALMONT INDUSTRIES AND CONSIDERED A TRADE SECRET. ANY USE OR DISCLOSURE WITHOUT THE CONSENT OF VALMONT INDUSTRIES IS STRICTLY PROHIBITED.

DESCRIPTION		
MONOPOLE 3 SECTOR FLEX FRAME ATTACHMENT ASSEMBLY		
CPD NO.	DRAWN BY	ENG. APPROVAL
NCS	KS 8/12/2025	8/13/2025
CLASS	SUB	DRAWING USAGE
87	02	CUSTOMER
		CHECKED BY
		JET 8/13/2025

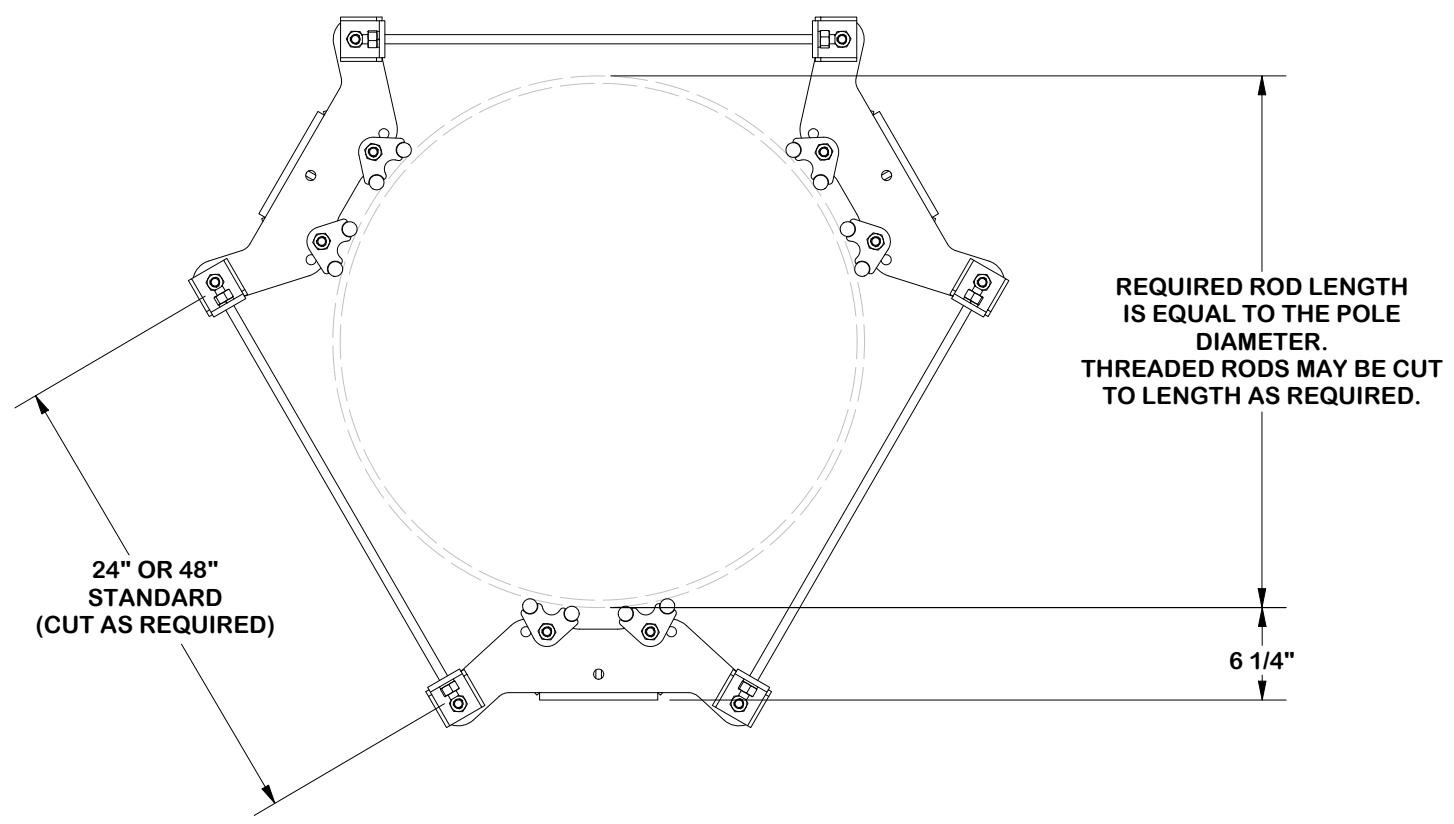


A **valmont** COMPANY

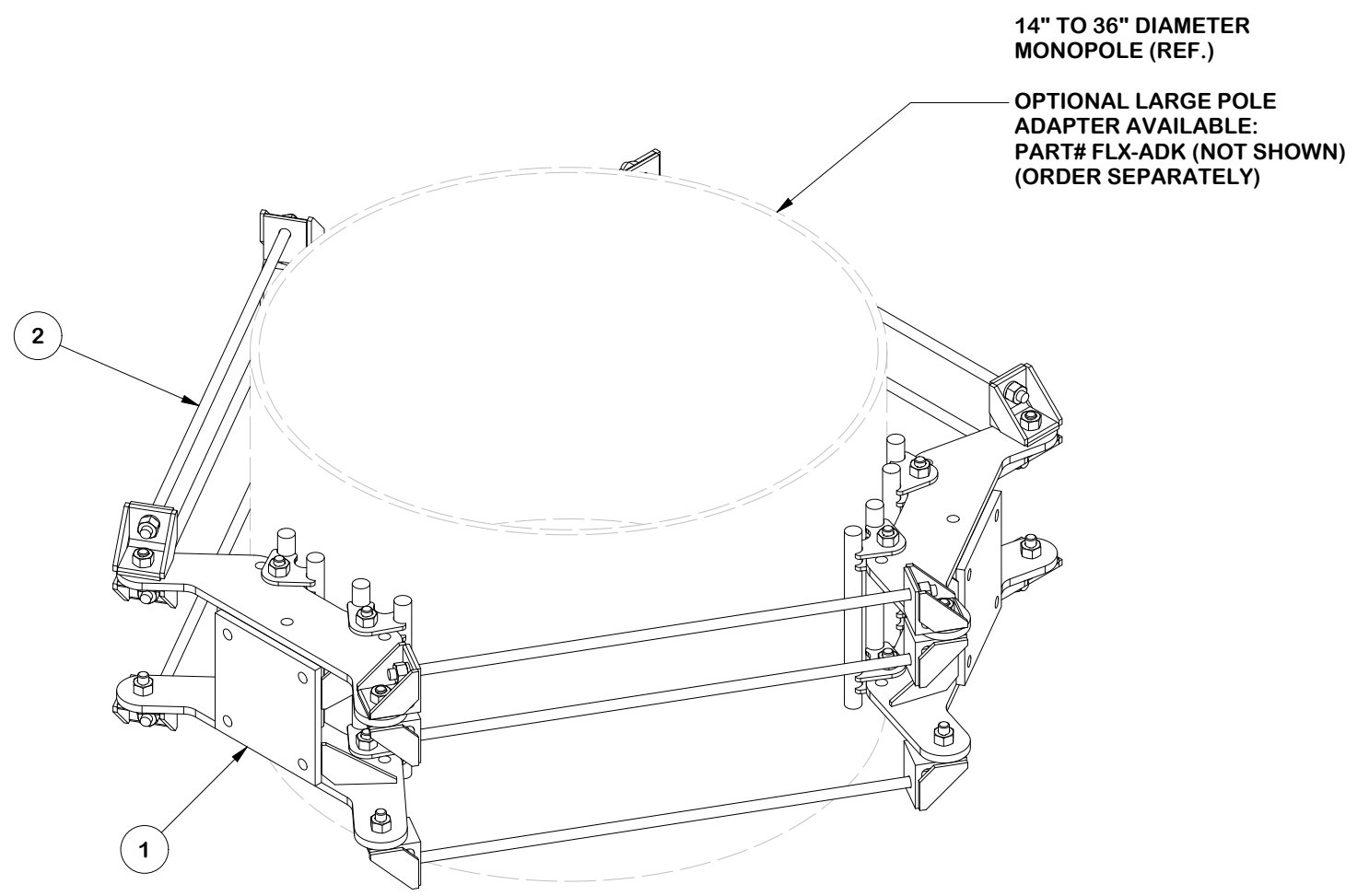
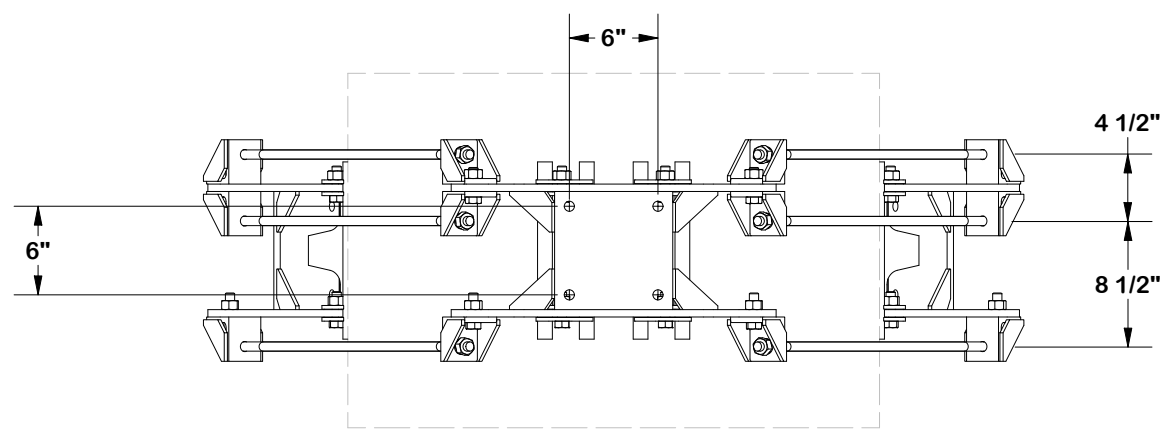
Engineering Support Team:
 sp1engineering@valmont.com

PART NO.	MSFAA-FLX3
DWG. NO.	MSFAA-FLX3

PARTS LIST						UNIT WT.	NET WT.
1	3	FLX-SDSS	P-FLX-SDHW	FLEXIBLE RING MOUNT SINGLE SECTOR ASSEMBLY		72.51	217.54
2	1	LWRM-HDWE	P-LWRM-HDWE	HARDWARE KIT FOR 3-SIDED COLLAR		62.57	62.57
TOTAL WT. #						280.11	



- NOTES:**
1. LOCKNUTS CANNOT BE LOOSEND.
 2. TIGHTEN LOCKNUTS AFTER DESIRED POSITION (SEE PAGE 3).
 3. FITS 6" X 6" HOLE PATTERN



FINISH:
HOT DIP GALVANIZED.

REV	DESCRIPTION OF REVISIONS	CPD	BY	DATE
C	UPDATED NOTES AND ADDED CABLE GUIDE REF	NCS	ADB	12/10/2025
B	ADDED NOTE TO PAGE 1	NCS	ADB	3/26/2025
A	CHANGED KITS	NCS	NSP	10/3/2024

REVISION HISTORY


TOLERANCE NOTES

TOLERANCES ON DIMENSIONS, UNLESS OTHERWISE NOTED ARE:
 SAWED, SHEARED AND GAS CUT EDGES ($\pm 0.030"$)
 DRILLED AND GAS CUT HOLES ($\pm 0.030"$) - NO CONING OF HOLES
 LASER CUT EDGES AND HOLES ($\pm 0.010"$) - NO CONING OF HOLES
 BENDS AND ANGLES ARE $\pm 1/2$ DEGREE
 ALL OTHER MACHINING ($\pm 0.030"$)
 ALL OTHER ASSEMBLY ($\pm 0.060"$)

PATENT INFORMATION: WWW.SITEPRO1.COM/PATENTS

PROPRIETARY NOTE:
 THE DATA AND TECHNIQUES CONTAINED IN THIS DRAWING ARE PROPRIETARY INFORMATION OF VALMONT INDUSTRIES AND CONSIDERED A TRADE SECRET. ANY USE OR DISCLOSURE WITHOUT THE CONSENT OF VALMONT INDUSTRIES IS STRICTLY PROHIBITED.

DESCRIPTION			
MONOPOLE 3 SECTOR FLEX FRAME ATTACHMENT ASSEMBLY			
CPD NO.	DRAWN BY	ENG. APPROVAL	
NCS	KS 8/12/2025	8/13/2025	
CLASS	SUB	DRAWING USAGE	CHECKED BY
87	02	CUSTOMER	JET 8/13/2025



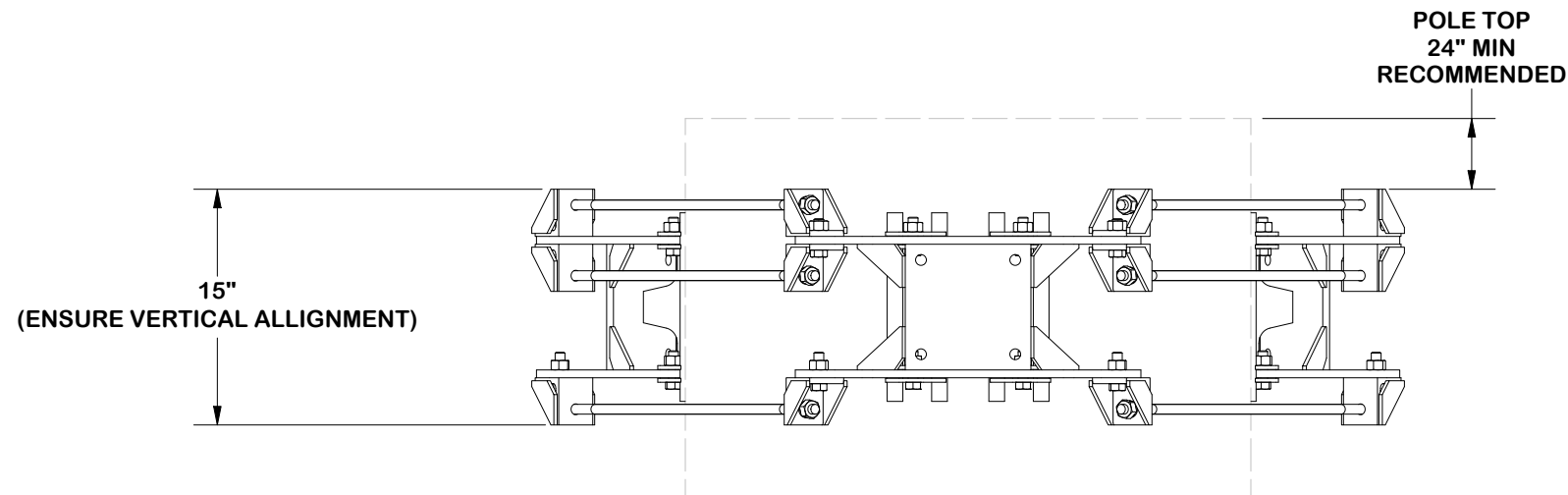
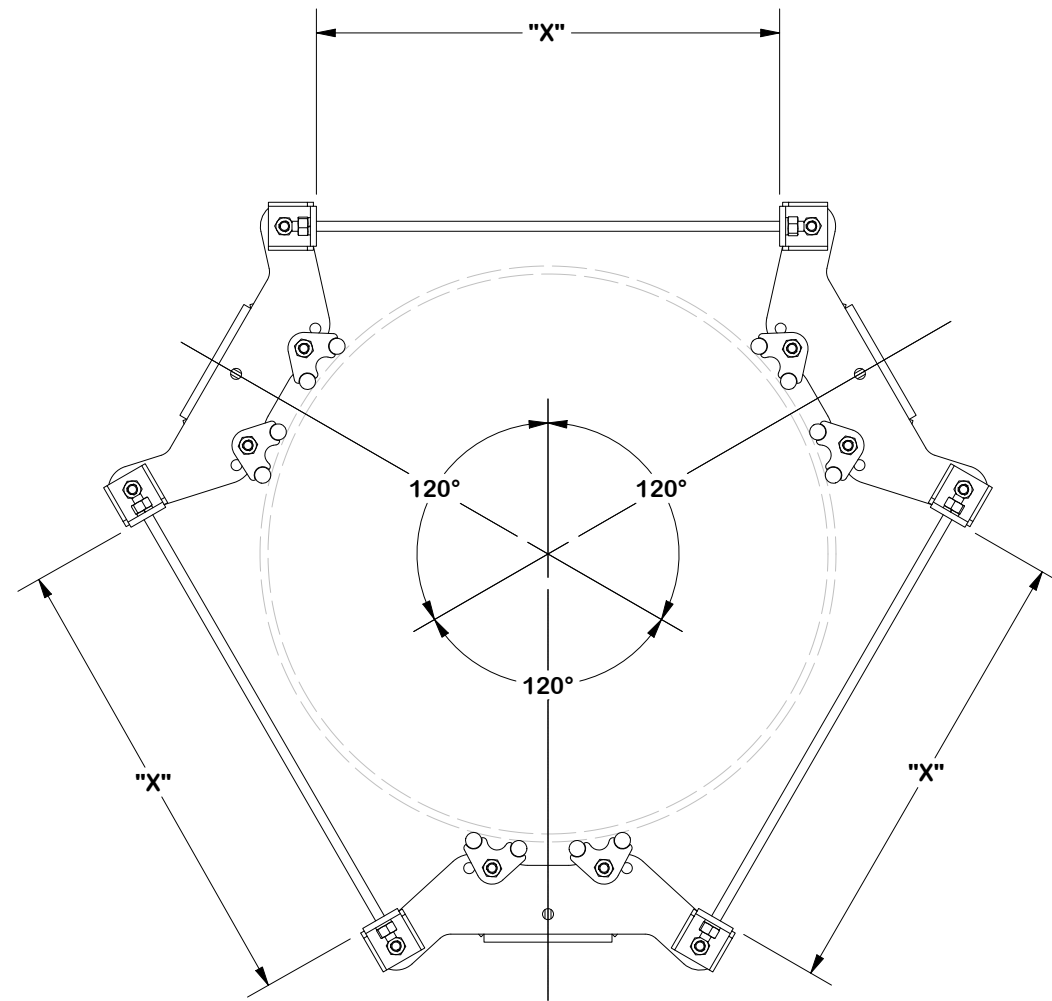
A valmont COMPANY

Engineering Support Team:
sp1engineering@valmont.com

PART NO.	FLX3-SD
DWG. NO.	MSFAA-FLX3

NOTE:
 ENSURE EQUAL DISTANCE
 BETWEEN BRACKETS "X"
 AND AT 120° APART FOR PLATFORMS.

DEVIATION IS ACCEPTABLE
 WITH EOR APPROVAL.



TOLERANCE NOTES

TOLERANCES ON DIMENSIONS, UNLESS OTHERWISE NOTED ARE:
 SAWED, SHEARED AND GAS CUT EDGES ($\pm 0.030"$)
 DRILLED AND GAS CUT HOLES ($\pm 0.030"$) - NO CONING OF HOLES
 LASER CUT EDGES AND HOLES ($\pm 0.010"$) - NO CONING OF HOLES
 BENDS AND ANGLES ARE $\pm 1/2$ DEGREE
 ALL OTHER MACHINING ($\pm 0.030"$)
 ALL OTHER ASSEMBLY ($\pm 0.060"$)

PATENT INFORMATION: WWW.SITEPRO1.COM/PATENTS

PROPRIETARY NOTE:
 THE DATA AND TECHNIQUES CONTAINED IN THIS DRAWING ARE PROPRIETARY INFORMATION OF VALMONT INDUSTRIES AND CONSIDERED A TRADE SECRET. ANY USE OR DISCLOSURE WITHOUT THE CONSENT OF VALMONT INDUSTRIES IS STRICTLY PROHIBITED.

DESCRIPTION
MONOPOLE 3 SECTOR FLEX FRAME ATTACHMENT ASSEMBLY

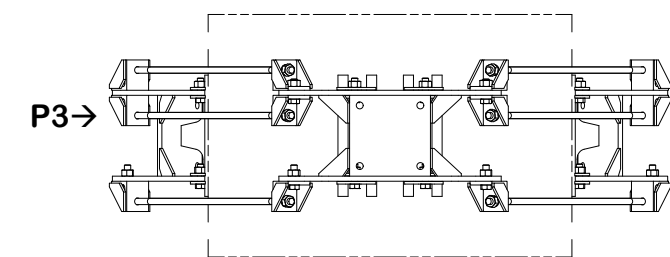
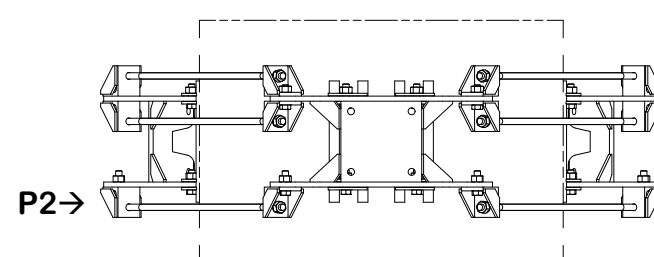
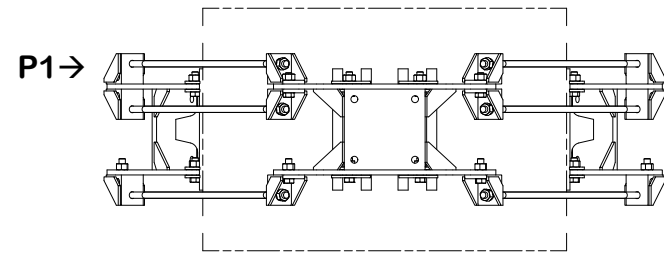
CPD NO. NCS	DRAWN BY KS 8/12/2025	ENG. APPROVAL 8/13/2025
CLASS 87	SUB 02	DRAWING USAGE CUSTOMER
	CHECKED BY JET 8/13/2025	



Engineering Support Team:
 sp1engineering@valmont.com

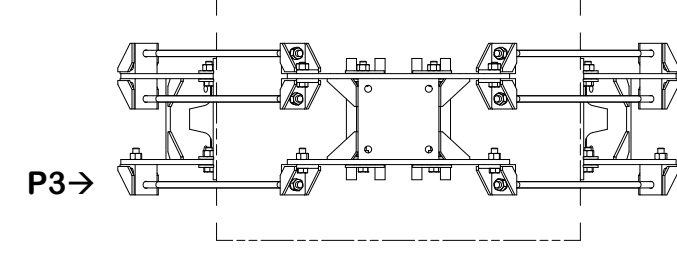
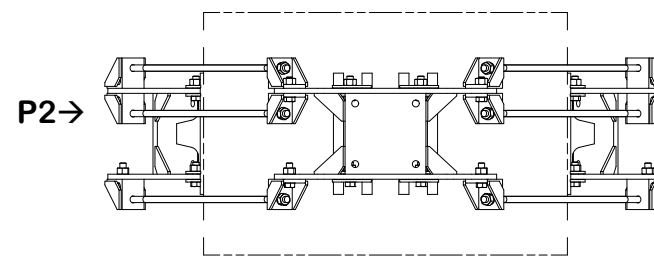
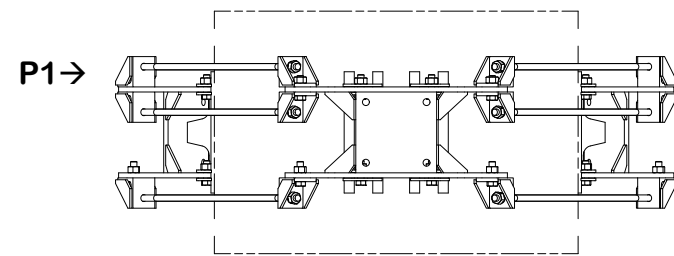
PART NO. FLX3-SD
DWG. NO. MSFAA-FLX3

INSTALL ORDER

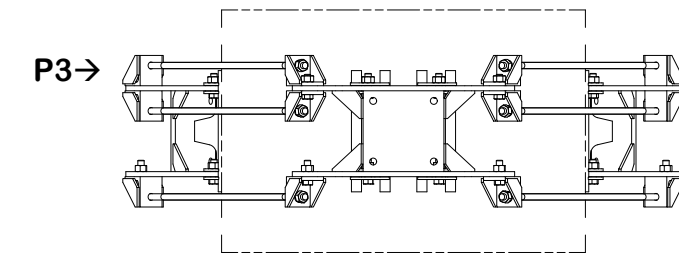
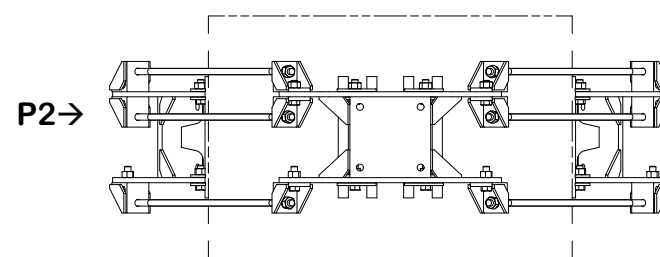
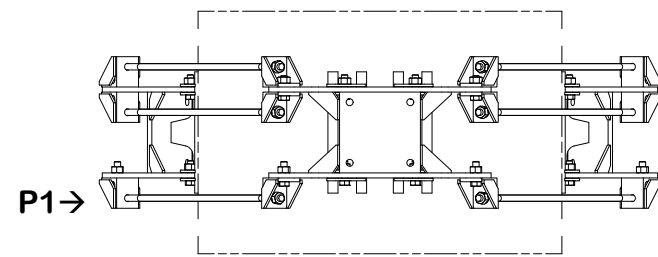


INITIAL TIGHTENING

NOTE:
DURING INITIAL TIGHTENING, P1 AND P2 MUST BE TIGHTENED FIRST TO PULL THE UPPER CLAMP PLATES INTO FULL CONTACT WITH THE POLE. ENSURE THE CLAMP MAKES TOP CONTACT BEFORE PROCEEDING WITH ANY ADDITIONAL TIGHTENING.



FINAL TIGHTENING



TOLERANCE NOTES

TOLERANCES ON DIMENSIONS, UNLESS OTHERWISE NOTED ARE:
 SAWED, SHEARED AND GAS CUT EDGES ($\pm 0.030"$)
 DRILLED AND GAS CUT HOLES ($\pm 0.030"$) - NO CONING OF HOLES
 LASER CUT EDGES AND HOLES ($\pm 0.010"$) - NO CONING OF HOLES
 BENDS AND ANGLES ARE $\pm 1/2$ DEGREE
 ALL OTHER MACHINING ($\pm 0.030"$)
 ALL OTHER ASSEMBLY ($\pm 0.060"$)

PATENT INFORMATION: WWW.SITEPRO1.COM/PATENTS

PROPRIETARY NOTE:
 THE DATA AND TECHNIQUES CONTAINED IN THIS DRAWING ARE PROPRIETARY INFORMATION OF VALMONT INDUSTRIES AND CONSIDERED A TRADE SECRET. ANY USE OR DISCLOSURE WITHOUT THE CONSENT OF VALMONT INDUSTRIES IS STRICTLY PROHIBITED.

DESCRIPTION
MONOPOLE 3 SECTOR FLEX FRAME ATTACHMENT ASSEMBLY

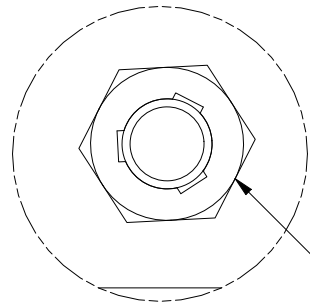
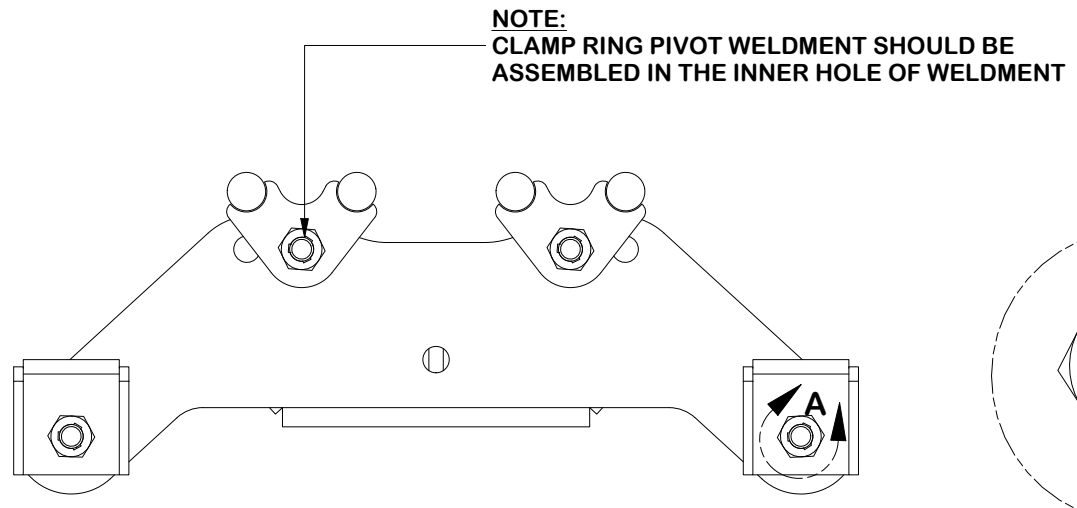
CPD NO. NCS	DRAWN BY KS 8/12/2025	ENG. APPROVAL 8/13/2025
CLASS 87	SUB 02	DRAWING USAGE CUSTOMER
	CHECKED BY JET 8/13/2025	



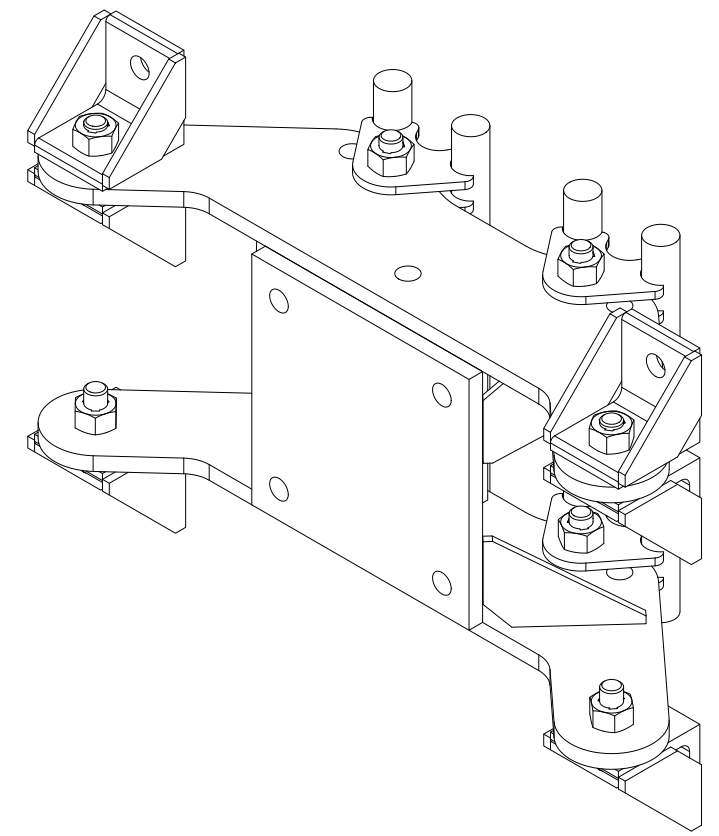
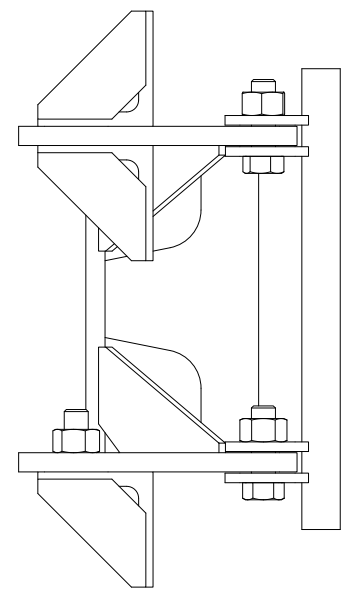
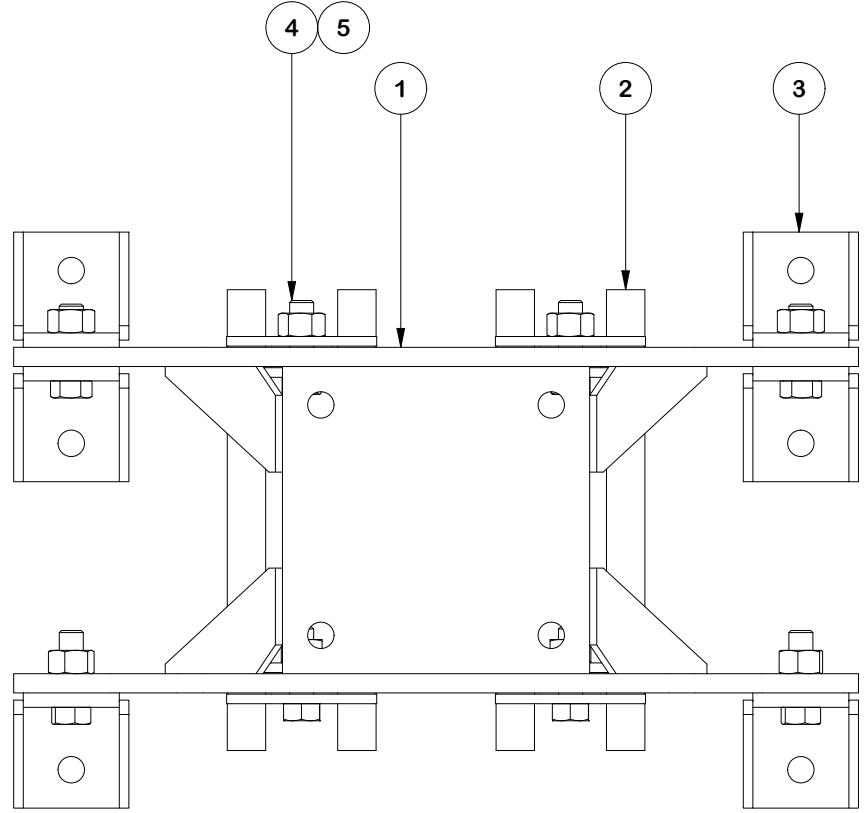
A valmont COMPANY

Engineering Support Team:
sp1engineering@valmont.com

PART NO. FLX3-SD
DWG. NO. MSFAA-FLX3



DETAIL A



PARTS LIST					
ITEM	QTY	PART NO.	PART DESCRIPTION	UNIT WT.	NET WT.
1	1	X-CR-SDW	FLEXIBLE RING MOUNT	42.23	42.23
2	2	X-CR-PW12	12" CLAMP RING PIVOT WELDMENT	6.93	13.85
3	6	X-CR-AGW	ANGLE ON WELDMENT	2.20	13.18
4	8	G5802	5/8" x 2" HDG HEX BOLT GR5	0.27	2.16
5	8	G58TRI-LNUT	5/8" HDG HEAVY 2H TRI-LOCK NUT	0.14	1.10
TOTAL WT. #				72.51	

FINISH:
HOT DIP GALVANIZED.

TOLERANCE NOTES
 TOLERANCES ON DIMENSIONS, UNLESS OTHERWISE NOTED ARE:
 SAWED, SHEARED AND GAS CUT EDGES ($\pm 0.030"$)
 DRILLED AND GAS CUT HOLES ($\pm 0.030"$) - NO CONING OF HOLES
 LASER CUT EDGES AND HOLES ($\pm 0.010"$) - NO CONING OF HOLES
 BENDS AND ANGLES ARE $\pm 1/2$ DEGREE
 ALL OTHER MACHINING ($\pm 0.030"$)
 ALL OTHER ASSEMBLY ($\pm 0.060"$)

PATENT INFORMATION: WWW.SITEPRO1.COM/PATENTS

DESCRIPTION
MONOPOLE 3 SECTOR FLEX FRAME ATTACHMENT ASSEMBLY

CPD NO. NCS	DRAWN BY KS 8/12/2025	ENG. APPROVAL 8/13/2025
CLASS 87	SUB 02	DRAWING USAGE CUSTOMER
CHECKED BY JET 8/13/2025		

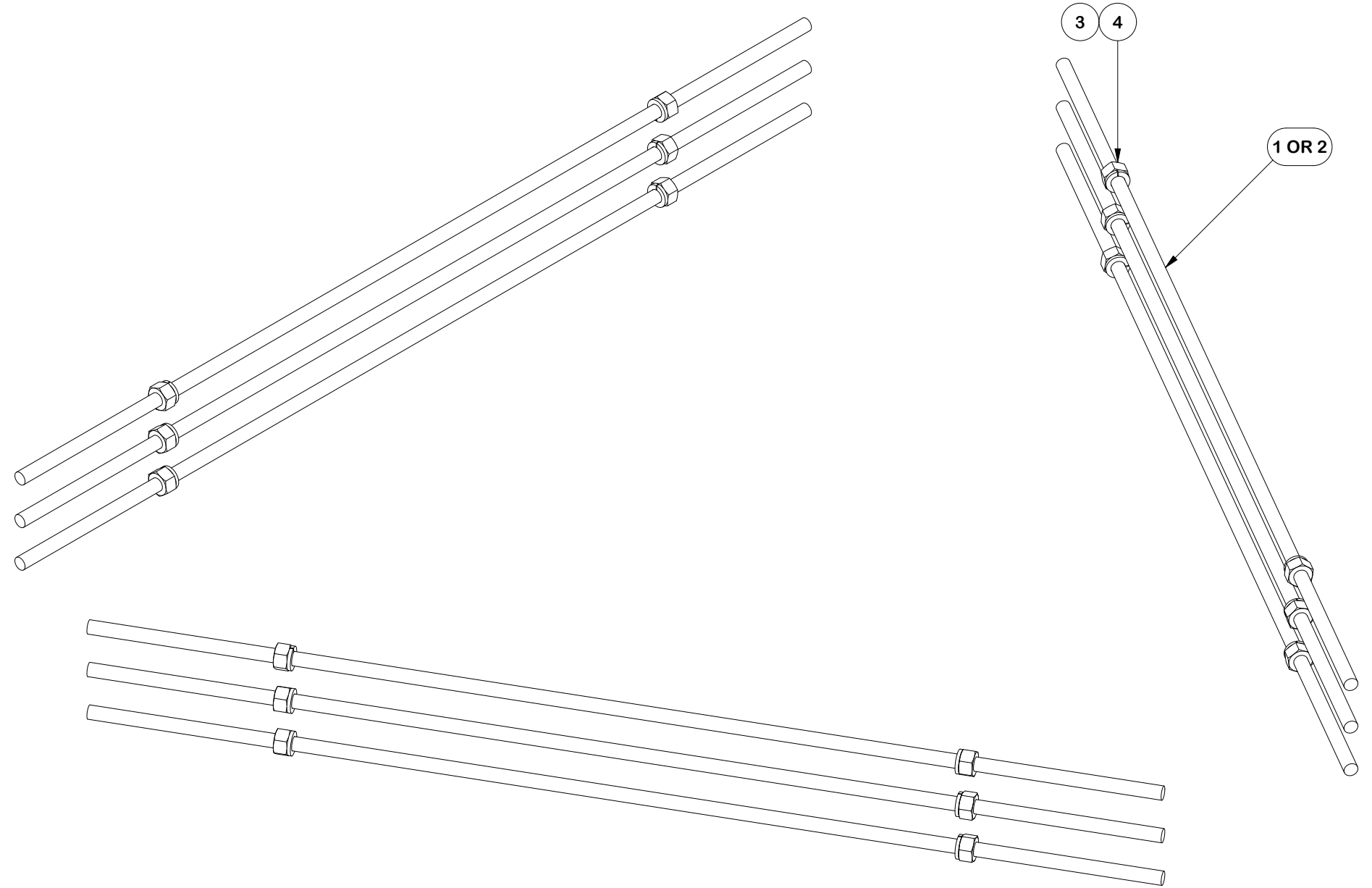
SITE PRO 1
 A valmont COMPANY

Engineering Support Team:
 sp1engineering@valmont.com

PART NO. FLX-SDSS
DWG. NO. MSFAA-FLX3

PROPRIETARY NOTE:
 THE DATA AND TECHNIQUES CONTAINED IN THIS DRAWING ARE PROPRIETARY INFORMATION OF VALMONT INDUSTRIES AND CONSIDERED A TRADE SECRET. ANY USE OR DISCLOSURE WITHOUT THE CONSENT OF VALMONT INDUSTRIES IS STRICTLY PROHIBITED.

PARTS LIST					
ITEM	QTY	PART NO.	PART DESCRIPTION	UNIT WT.	NET WT.
1	9	G58R-48	5/8" X 48" THREADED ROD (HDG.)	4.43	39.84
2	9	G58R-24	5/8" X 24" THREADED ROD (HDG.)	2.21	19.92
3	18	G58LW	5/8" HDG LOCKWASHER	0.03	0.47
4	18	G58NUT	5/8" HDG HEAVY 2H HEX NUT	0.13	2.34
TOTAL WT. #					62.57



TOLERANCE NOTES

TOLERANCES ON DIMENSIONS, UNLESS OTHERWISE NOTED ARE:
 SAWED, SHEARED AND GAS CUT EDGES ($\pm 0.030"$)
 DRILLED AND GAS CUT HOLES ($\pm 0.030"$) - NO CONING OF HOLES
 LASER CUT EDGES AND HOLES ($\pm 0.010"$) - NO CONING OF HOLES
 BENDS AND ANGLES ARE $\pm 1/2$ DEGREE
 ALL OTHER MACHINING ($\pm 0.030"$)
 ALL OTHER ASSEMBLY ($\pm 0.060"$)

PATENT INFORMATION: WWW.SITEPRO1.COM/PATENTS

PROPRIETARY NOTE:
 THE DATA AND TECHNIQUES CONTAINED IN THIS DRAWING ARE PROPRIETARY INFORMATION OF VALMONT INDUSTRIES AND CONSIDERED A TRADE SECRET. ANY USE OR DISCLOSURE WITHOUT THE CONSENT OF VALMONT INDUSTRIES IS STRICTLY PROHIBITED.

DESCRIPTION
MONOPOLE 3 SECTOR FLEX FRAME ATTACHMENT ASSEMBLY

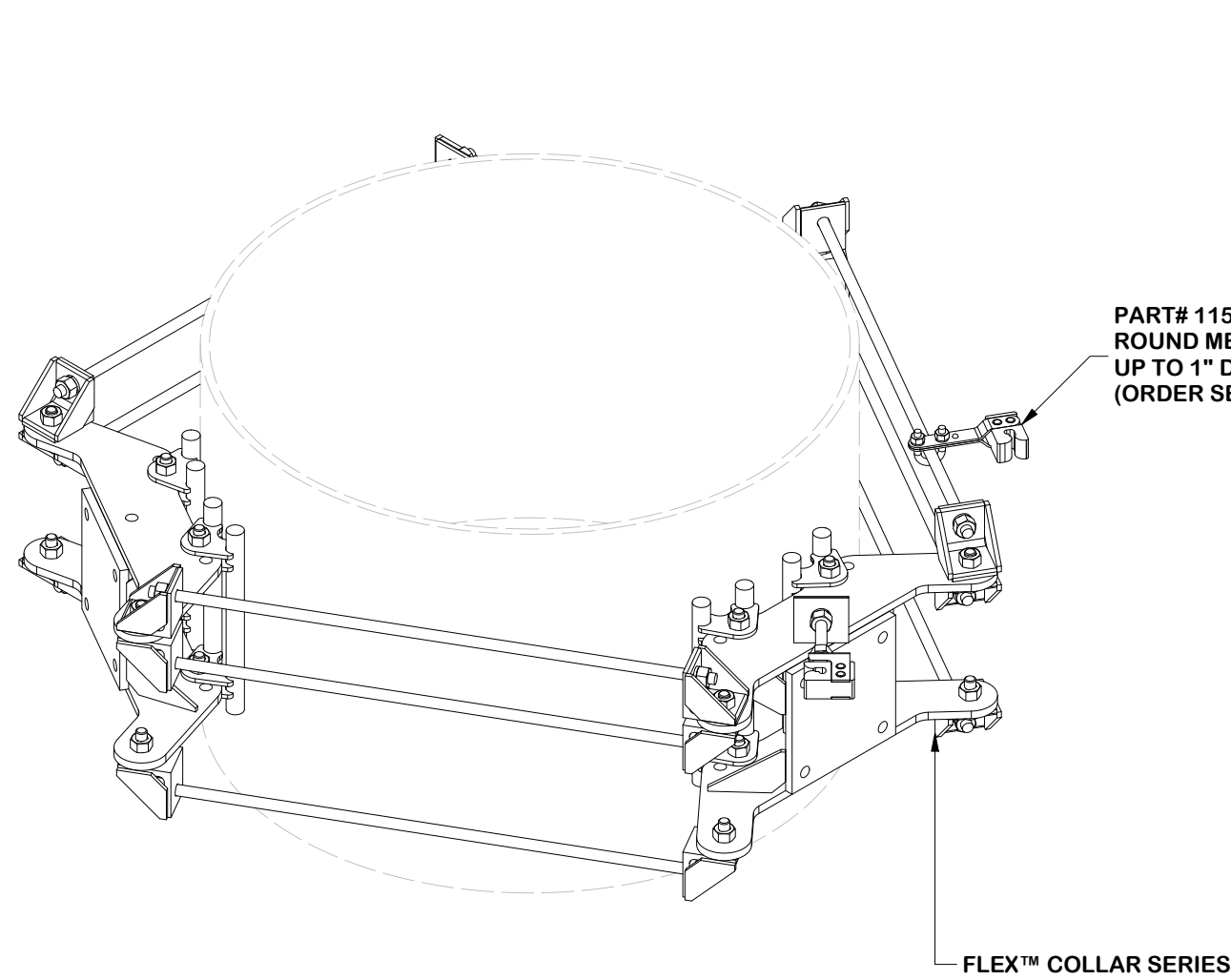
CPD NO. NCS	DRAWN BY KS	8/12/2025	ENG. APPROVAL 8/13/2025
CLASS 87	SUB 02	DRAWING USAGE CUSTOMER	CHECKED BY JET
			8/13/2025



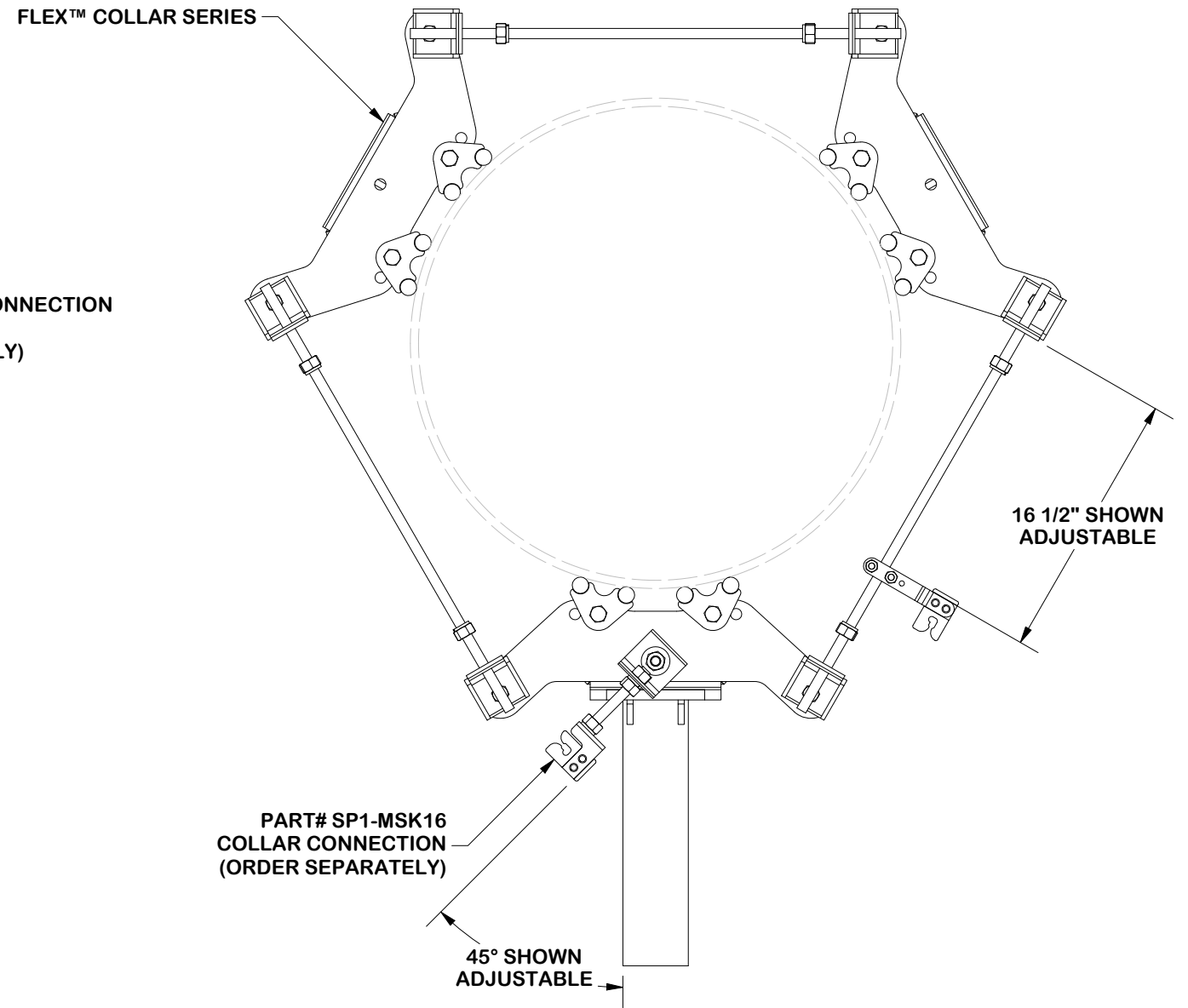
Engineering Support Team:
 sp1engineering@valmont.com

PART NO. LWRM-HDWE	PAGE 6 OF 8
DWG. NO. MSFAA-FLX3	

CABLE GUIDE REFERENCE



ISO VIEW



TOP VIEW

TOLERANCE NOTES

TOLERANCES ON DIMENSIONS, UNLESS OTHERWISE NOTED ARE:
 SAWED, SHEARED AND GAS CUT EDGES ($\pm 0.030"$)
 DRILLED AND GAS CUT HOLES ($\pm 0.030"$) - NO CONING OF HOLES
 LASER CUT EDGES AND HOLES ($\pm 0.010"$) - NO CONING OF HOLES
 BENDS AND ANGLES ARE $\pm 1/2$ DEGREE
 ALL OTHER MACHINING ($\pm 0.030"$)
 ALL OTHER ASSEMBLY ($\pm 0.060"$)

PATENT INFORMATION: WWW.SITEPRO1.COM/PATENTS

PROPRIETARY NOTE:
 THE DATA AND TECHNIQUES CONTAINED IN THIS DRAWING ARE PROPRIETARY INFORMATION OF VALMONT INDUSTRIES AND CONSIDERED A TRADE SECRET. ANY USE OR DISCLOSURE WITHOUT THE CONSENT OF VALMONT INDUSTRIES IS STRICTLY PROHIBITED.

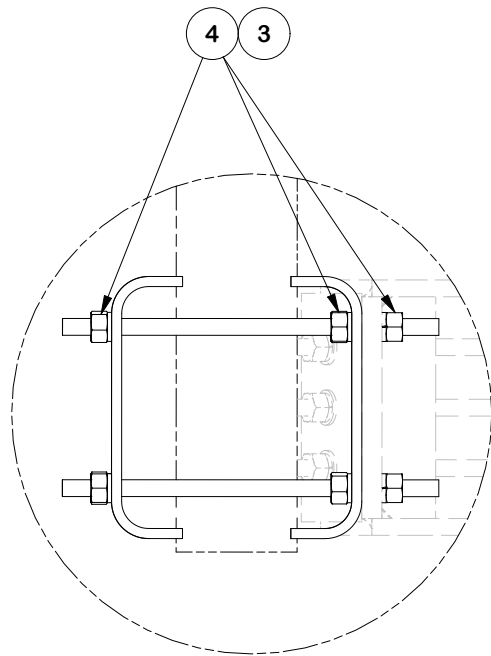
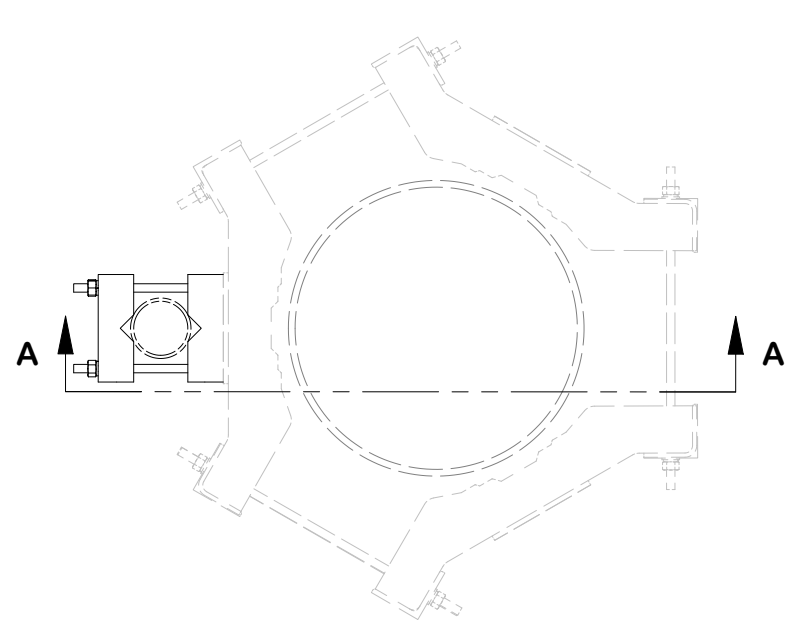
DESCRIPTION
MONOPOLE 3 SECTOR FLEX FRAME ATTACHMENT ASSEMBLY

CPD NO. NCS	DRAWN BY KS 8/12/2025	ENG. APPROVAL 8/13/2025
CLASS 87	SUB 02	DRAWING USAGE CUSTOMER
	CHECKED BY JET 8/13/2025	

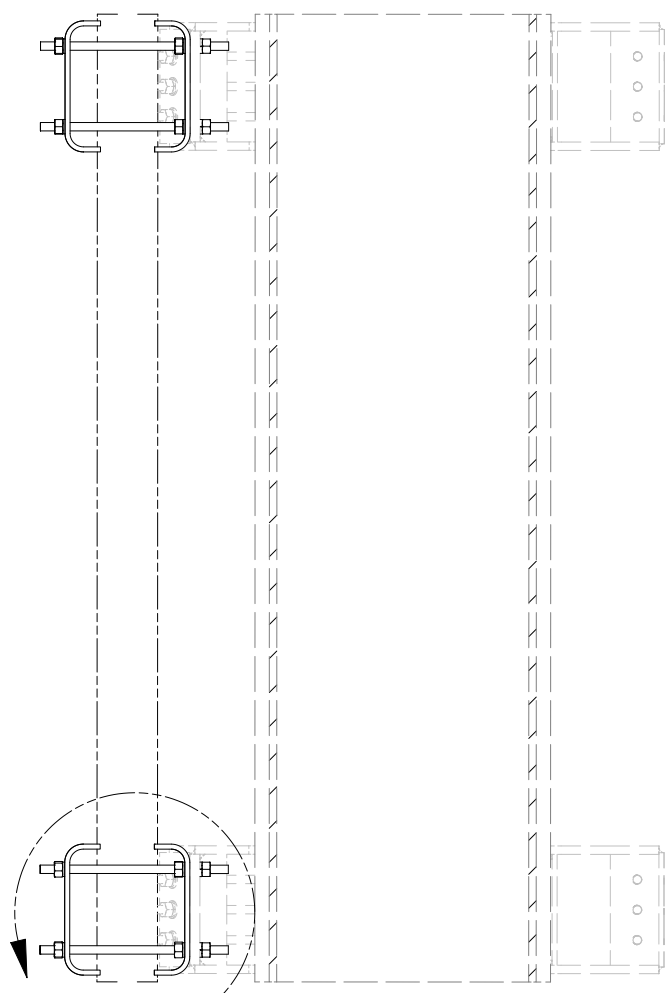


Engineering Support Team:
 sp1engineering@valmont.com

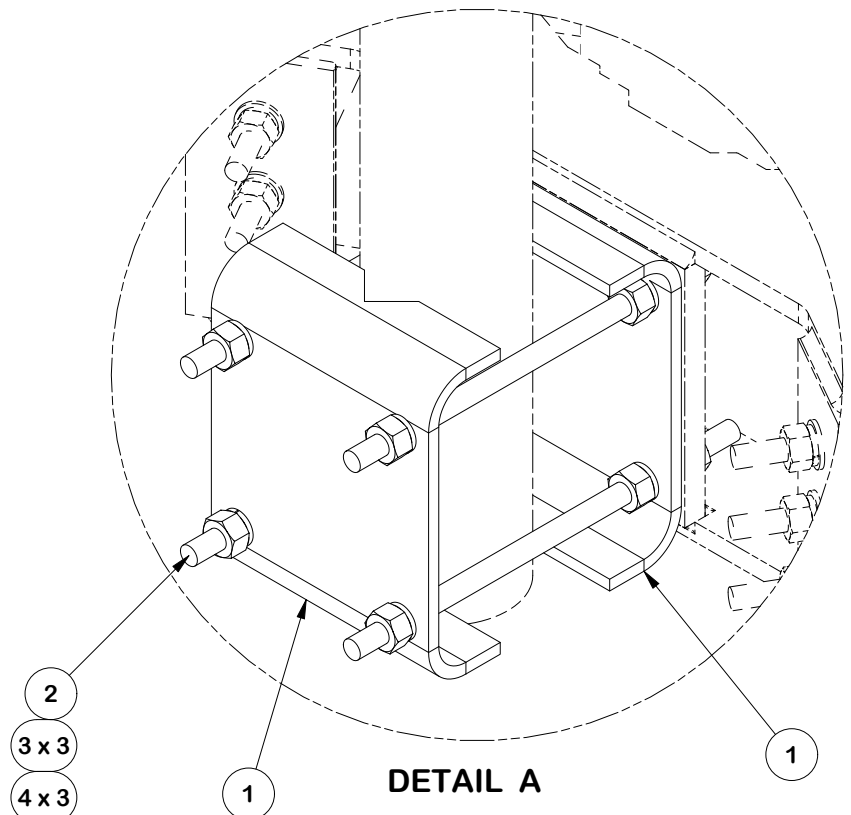
PART NO. CABLE GUIDE REF
DWG. NO. MSFAA-FLX3



DETAIL B

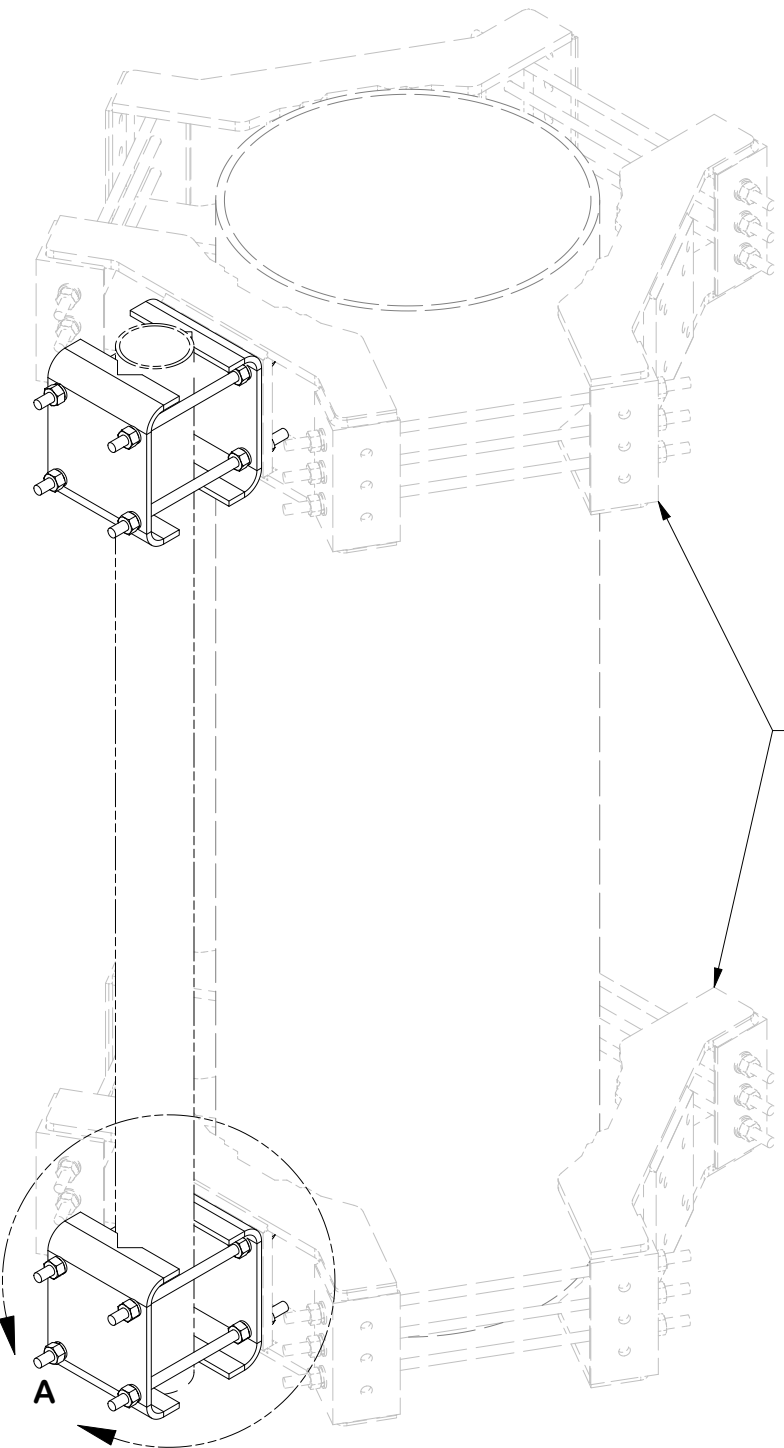


SECTION A-A



DETAIL A

PARTS LIST						
ITEM	QTY	PART NO.	PART DESCRIPTION	LENGTH	UNIT WT.	NET WT.
1	4	X-214130	3/8" x 8" FLAT STOCK (A36)	13 3/16 in	11.56	46.26
2	8	G58R-14	5/8" x 14" THREADED ROD (HDG.)		1.22	9.76
3	24	G58LW	5/8" HDG LOCKWASHER		0.03	0.63
4	24	G58NUT	5/8" HDG HEAVY 2H HEX NUT		0.13	3.12
TOTAL WT. #						57.05



FLX3-SD / FLX4-SD
FOR POLES 14" TO 45" DIA.

OR

LWRM UNIVERSAL RING MOUNT
FOR POLES 12" TO 45" DIA.

OR

UGLM MINI RING MOUNT
FOR POLES 10-1/2" TO 28" DIA.
(ORDER SEPARATELY)

TOLERANCE NOTES

TOLERANCES ON DIMENSIONS, UNLESS OTHERWISE NOTED ARE:
 SAWED, SHEARED AND GAS CUT EDGES ($\pm 0.030"$)
 DRILLED AND GAS CUT HOLES ($\pm 0.030"$) - NO CONING OF HOLES
 LASER CUT EDGES AND HOLES ($\pm 0.010"$) - NO CONING OF HOLES
 BENDS AND ANGLES ARE $\pm 1/2$ DEGREE
 ALL OTHER MACHINING ($\pm 0.030"$)
 ALL OTHER ASSEMBLY ($\pm 0.060"$)

PATENT INFORMATION: WWW.SITEPRO1.COM/PATENTS

PROPRIETARY NOTE:
 THE DATA AND TECHNIQUES CONTAINED IN THIS DRAWING ARE PROPRIETARY INFORMATION OF VALMONT INDUSTRIES AND CONSIDERED A TRADE SECRET. ANY USE OR DISCLOSURE WITHOUT THE CONSENT OF VALMONT INDUSTRIES IS STRICTLY PROHIBITED.

DESCRIPTION
MONOPOLE 3 SECTOR FLEX FRAME ATTACHMENT ASSEMBLY



Engineering Support Team:
 sp1engineering@valmont.com

A valmont COMPANY

REV	DESCRIPTION OF REVISIONS	CPD	BY	DATE
A	UPDATED TEMPLATE	NCS	CSL	9/5/2024

CPD NO. NCS	DRAWN BY KS	8/12/2025	ENG. APPROVAL 8/13/2025
CLASS 87	SUB 02	DRAWING USAGE CUSTOMER	CHECKED BY JET
			8/13/2025

PART NO. FMA2	DWG. NO. MSFAA-FLX3